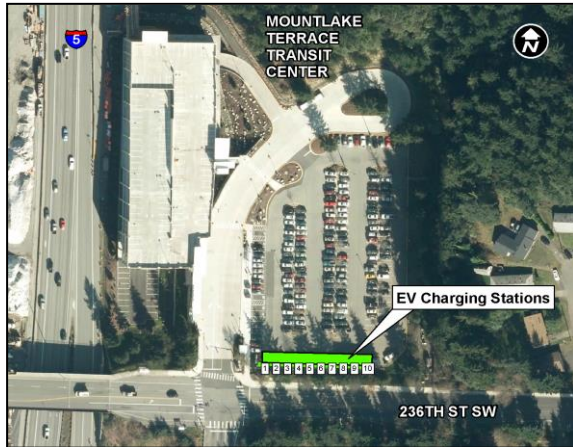


How to Charge

Mountlake Terrace Transit Center Electric Vehicle Charging Stations



Ten electric vehicle charging stations are installed and ready to go at the Mountlake Terrace Transit Center.

These stations will meet the needs for the increasing number of electric vehicles, and support this extremely green and less expensive-to-operate form of transportation.

This brochure answers any questions on how to use the stations.

First off, where are the electric vehicle charging stations located?

They are located at the south side of the surface lot at the Mountlake Terrace Transit Center, 6001 236th Street SW.

Tell me more about the station capabilities.

Each station includes two charging ports – one at slower speed charging and one at medium speed.

Stations are UL-Listed, ensuring safe operation and quality. This includes operation features such as *turning off automatically when the vehicle is fully charged.*

Great, I found the stations, how do I pay?

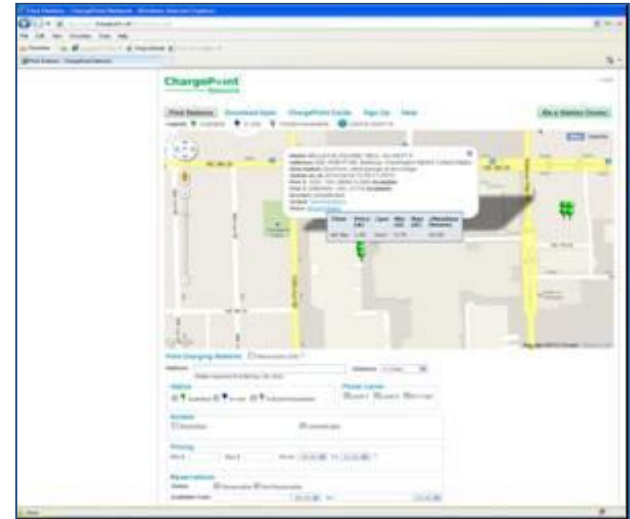
The easiest way to pay is to set up an account with the payment operator Chargepoint at www.chargepoint.net/chargepoint-card.php. Once you set up an account, simply swipe the provided card in front of the station to begin the charging session/unlock the charger.



Other methods include calling the telephone number on the charging station (if you have already set up a Chargepoint account) or using a credit card with a RFID tag.

Okay, I will be using the electric vehicle charging stations at the Mountlake Terrace Transit Center. Where else can I charge my electric vehicle?

There are numerous locations throughout the region with electric vehicle charging stations. One resource to find information is www.chargepoint.net/find-stations.php.



Another feature of the website is that it includes information about whether or not a charging station is in use.

Sounds good, what are the rates?

Rates have been set by the Mountlake Terrace City Council at \$0.85 per hour of electric charging, which is included in the minimum amount of \$1.50 and a maximum amount of \$3.00 per charging session. The rates may increase over time.



Why go electric?

Electric vehicles are environmentally friendly, inexpensive, and reduce dependence on foreign fuels.

In the Greater Seattle area, 50% of air pollution comes from vehicles, equal to emissions from all other sources combined (such as manufacturing and building operation). Electric vehicles do not generate any pollution and utilize clean power from our State's hydro power plants.

Costs of electricity are considerably lower than gasoline. The long term costs of electric cars today is quite low, and the costs of new electric vehicles is coming down quickly (for instance, Mitsubishi is releasing an electric car in 2012 that will cost \$5,000 less than any other electric vehicle on the market).

Finally, electric cars are powered by fuel made in America.

For more information contact
Phone 425.744.6267
PermitSpecialist@ci.mlt.wa.us
www.cityofmlt.com



City of Mountlake Terrace
Community and Economic Development
PO Box 72
Mountlake Terrace, WA 98043

This brochure is not intended to cover all situations nor to replace any code provision that may apply and may differ or conflict with this information. Contact City staff to discuss your specific project.



How to Charge

Mountlake Terrace Transit Center Electric Vehicle Charging Stations

