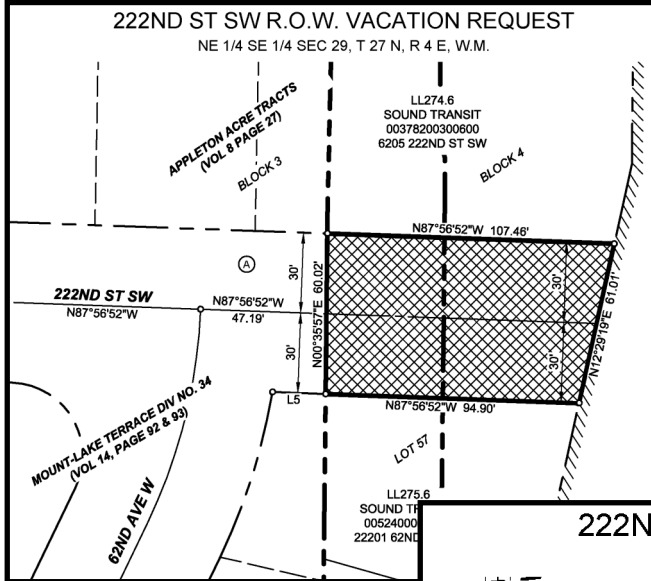


222nd Street Vacation



Zoning: General Commercial (CG), and Recreation and Parks District (REC)

Applicant: Sound Transit

Description: Vacate 6,071 square feet of an unopened portion of 222nd, located south of the former Melody Hill School, north of residential lots (now demolished) and abutting I-5. The vacated area contains access to the light rail guideway.

Status: Approved

