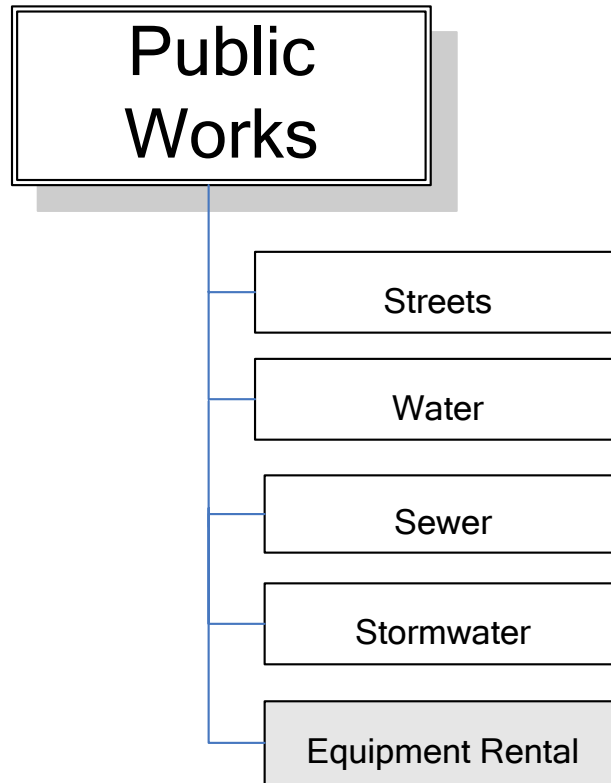


EQUIPMENT RENTAL

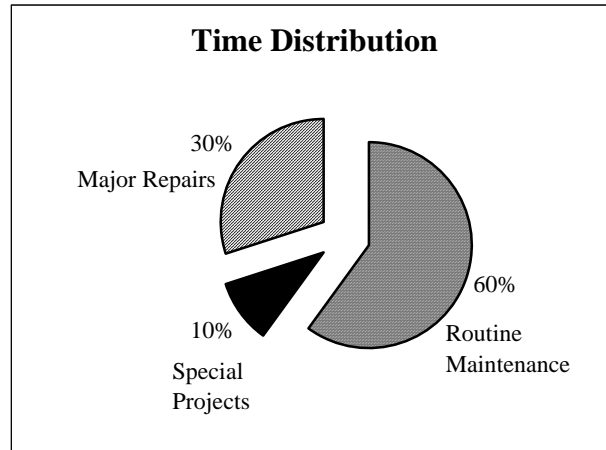


Positions – Public Works Equipment Rental Only:

	2003	2004	2005	2006	2007	2008
	<u>Actual</u>	<u>Actual</u>	<u>Actual</u>	<u>Actual</u>	<u>Adopted</u>	<u>Adopted</u>
Public Works Director	0.10	0.10	0.20	0.20	0.20	0.20
Shop Foreman	1.00	1.00	1.00	1.00	1.00	1.00
Shop Mechanic	1.00	1.00	1.00	1.00	1.00	1.00
Administrative Assistant	<u>0.00</u>	<u>0.00</u>	<u>0.30</u>	<u>0.30</u>	<u>0.25</u>	<u>0.25</u>
Total	2.10	2.10	2.50	2.50	2.45	2.45

Mission and Responsibilities:

The Equipment Rental Division provides consistently reliable maintenance service to the approximately 100 City owned vehicles and 40 pieces of equipment, as well as 5 vehicles maintained through an agreement with the City of Brier and to assist with the purchasing of new vehicles and equipment per the established life cycle replacement plan for all vehicles and equipment. The Shop Foreman/Equipment Rental Manager, who reports to the Public Works Director, is responsible for managing the annual work tasks to accomplish our mission.



Goals and Objectives:

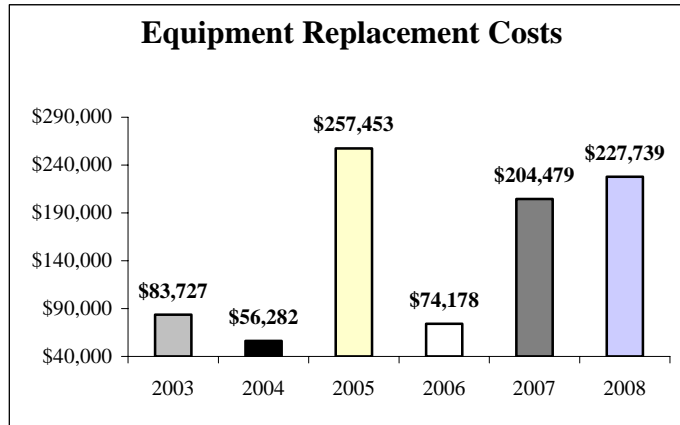
Council Goal: Maintain appropriate and essential public services in a cost-effective manner

- Respond to equipment rental customer needs in a timely manner, which is, in most cases, the same day
- Assist all City departments with determining appropriate equipment to meet their particular needs
- Fulfill the requirements of the local agreement with Brier to assure their needs are being met

PERFORMANCE MEASURES	2004 Actual	2005 Actual	2006 Estimate	2007 Adopted	2008 Adopted
Routine maintenance performed within 4 hours of vehicle or equipment entering shop	95%	95%	95%	95%	95%
Major repair needs diagnosed and repairs initiated w/in 8 hours of vehicle or equipment entering shop	90%	90%	90%	90%	90%
Obtain the maximum years possible out of new or existing equipment	100%	100%	100%	100%	100%

Highlights and Changes:

- A new backhoe with increased capabilities will be purchased to replace the current 1987 model
- A new crack sealer will be purchased to replace the failed one purchased in 2001



Financial Summary:

	2003 Actual	2004 Actual	2005 Actual	2006 Revised	2007 Adopted	2008 Adopted
SOURCES & USES						
BEGINNING FUND BALANCE	\$ 1,312,612	\$ 1,699,305	\$ 2,158,815	\$ 2,150,271	\$ 2,332,982	\$ 2,537,166
REVENUES						
Reimbursements From Other Funds	891,749	914,917	590,070	735,915	848,425	1,002,519
Investment Interest	64,784	77,301	85,873	89,277	\$ -	\$ -
Other Revenues	19,834	12,248	1,163	3,500	\$ -	\$ -
Total Operating Revenues	\$ 976,367	\$ 1,004,466	\$ 677,106	\$ 828,692	\$ 848,425	\$ 1,002,519
Other Financing Sources:						
Sale of Fixed Assets	\$ -	\$ 7,044	\$ 33,705	\$ 5,000	\$ 10,000	\$ 10,000
Total Other Financing Sources	\$ -	7,044	33,705	5,000	10,000	10,000
TOTAL REVENUES AND OTHER SOURCES	\$ 2,288,979	\$ 2,710,815	\$ 2,869,626	\$ 2,983,963	\$ 3,191,407	\$ 3,549,685
EXPENDITURES						
Equipment Maintenance	\$ 421,079	\$ 425,306	\$ 455,418	\$ 537,126	\$ 538,762	\$ 561,862
Debt Service on Police Vehicles	64,956	62,916	\$ -	\$ -	\$ -	\$ -
TOTAL OPERATING EXPENDITURES	\$ 486,035	\$ 488,222	\$ 455,418	\$ 537,126	\$ 538,762	\$ 561,862
Other Financing Uses:						
Furniture & Equipment	\$ 19,912	\$ 7,496	\$ 5,202	\$ 39,677	\$ 1,000	\$ 1,000
Equipment Replacement	83,727	56,282	257,453	114,178	204,479	227,739
Transfers to Other Funds	\$ -	\$ -	\$ 1282	\$ -	\$ -	\$ -
Total Other Financing Uses	103,639	63,778	263,937	153,855	205,479	228,739
TOTAL EXPENDITURES & OTHER USES	\$ 589,674	\$ 552,000	\$ 719,355	\$ 690,981	\$ 744,241	\$ 790,601
Operating Revenues over (under) Operating Expenditures	\$ 490,332	\$ 516,244	\$ 221,688	\$ 291,566	\$ 309,663	\$ 440,657
ENDING FUND BALANCES						
Reserved For:						
Equipment Reserve	\$ 1,699,305	\$ 2,158,815	\$ 2,150,271	\$ 2,292,982	\$ 2,447,166	\$ 2,669,084
ENDING FUND BALANCES	\$ 1,699,305	\$ 2,158,815	\$ 2,150,271	\$ 2,292,982	\$ 2,447,166	\$ 2,759,084
TOTAL EXPENDITURES, OTHER USES & FUND BALANCES	\$ 2,288,979	\$ 2,710,815	\$ 2,869,626	\$ 2,983,963	\$ 3,191,407	\$ 3,549,685

Six-Year Equipment Rental Replacement Program

Vehicle ID Number	Vehicle Description	Year	2007	2008	2009	2010	2011	2012	TOTAL
MIS 21	TORO GROUNDMASTER	2007	\$ 22,781						\$ 22,781
TLR-8	'87 INGERSOLL RAND SCO281 AIR COMPRESSOR	2007	28,866						28,866
C-72	95 Chevy Caprice PW Supervisor	2007	22,000						22,000
TR-6	'87 CASE 580E BACKHOE	2007	74,112						74,112
NEW	Truck for Parks Supervisor	2007	22,000						22,000
C-97	99 Ford Crown Vic	2007	34,720						34,720
C-11	96 CHEV ASTRO VAN (WHITE)	2008		32,326					32,326
C-29	2005 Crown Victoria	2008		27,686					27,686
C-30	2005 Crown Victoria	2008		27,886					27,886
C-31	2005 Crown Victoria	2008		27,886					27,886
C-32	2005 Crown Victoria	2008		27,886					27,886
C-33	2005 Crown Victoria	2008		28,143					28,143
C-34	2005 Crown Victoria	2008		28,143					28,143
C-35	2005 Crown Victoria	2008		27,783					27,783
C-96	99 FORD EXPEDITION	2009			55,771				55,771
MIS-22	99 JOHN DEERE GATER	2009			17,055				17,055
MIS-24	TORO MOWER	2009			38,824				38,824
P-25	95 GMC 1TON PICKUP	2009			95,413				95,413
TLR-15	SMART SPEED TRAILER	2009			41,547				41,547
TR-7	USED JOHN DEERE	2009			50,987				50,987
C-75	95 FORD TAURUS-BLUE	2010				29,752			29,752
CS-1	71 ETMYR CHIP SPREADER	2010				58,535			58,535
D-11	1994 CHEVROLET 2 YD	2010				40,847			40,847
D-12	1995 FREIGHTLINER 6/8 YRD	2010				141,421			141,421
D-13	1995 FREIGHTLINER 6/8 YRD	2010				141,421			141,421
MIS-14	1995 TENCO(WAUSAU) SNOWPLOW	2010				12,966			12,966
MIS-15	1995 TENCO(WAUSAU) SNOWPLOW	2010				12,966			12,966
MIS-25	Mower	2010				3,207			3,207
P-26	95 WHITE GMC 3/4T PICKUP	2010				33,263			33,263
P-27	95 WHITE GMC 3/4T PICKUP	2010				33,263			33,263
P-28	95 WHITE GMC 3/4T PICKUP	2010				33,263			33,263
P-29	95 WHITE GMC 3/4T PICKUP	2010				33,263			33,263
P-30	96 FORD 1/2TON PU	2010				32,961			32,961
S-5	2002 ELGIN STREET SWEEPER	2010				207,989			207,989
D-10	'79 INTERNATIONAL 10 YD DIESEL DUMP TRUCK	2011					67,501		67,501
New C-29	Traffic Control Vehicle	2011					32,050		32,050
New C-30	Patrol	2011					32,282		32,282
New C-31	Patrol	2011					32,282		32,282
New C-32	Patrol	2011					32,282		32,282
New C-33	Patrol	2011					32,580		32,580
New C-34	Patrol	2011					32,580		32,580
New C-35	Patrol	2011					32,162		32,162
C-26	2003 FORD CROWN VICTORIA (GRN)	2012						37,357	37,357
C-98	2002 CHEV BLAZER	2012						33,607	33,607
C-99	2002 DODGE STRATUS	2012						24,054	24,054
MIS-17	97 ONAN/SMILE GENERATOR	2012						16,631	16,631
TLR-18	2004 UTILITY TRAILER, 5X8 (hauls the Husqvarna Mower)	2012						2,158	2,158
TLR-9	92 TRAILMAX TRAILOR	2012						10,035	10,035
TOTALS			\$ 204,479	\$ 227,739	\$ 299,597	\$ 815,117	\$ 293,719	\$ 123,842	\$ 1,964,493