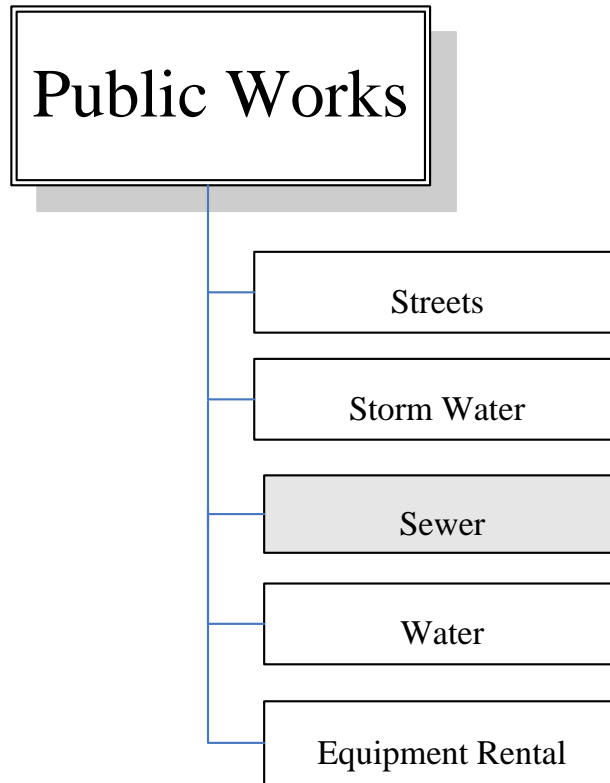


SEWER

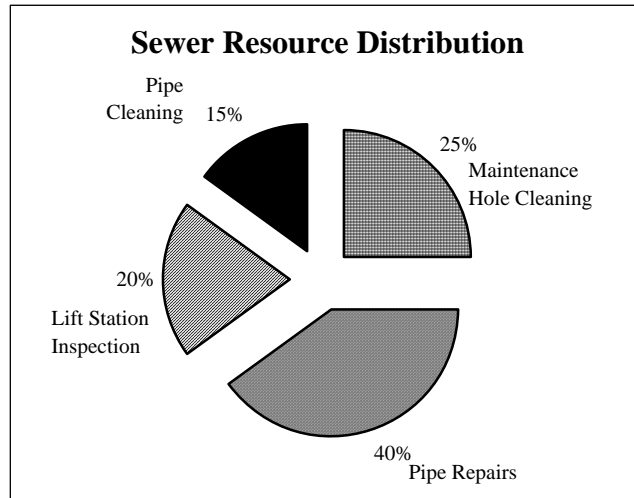


Positions – Public Works Sewer Only:

	2003 <u>Actual</u>	2004 <u>Actual</u>	2005 <u>Actual</u>	2006 <u>Actual</u>	2007 <u>Budget</u>	2008 <u>Budget</u>
Public Works Director	0.18	0.18	0.30	0.30	0.30	0.30
Public Works Supervisor	0.23	0.23	0.35	0.35	0.35	0.35
Maintenance Worker I/II	3.30	3.30	3.30	3.30	3.30	3.30
Administrative Assistant	<u>0.13</u>	<u>0.13</u>	<u>0.25</u>	<u>0.25</u>	<u>0.20</u>	<u>0.20</u>
Total	3.84	3.84	4.20	4.20	4.15	4.15

Mission and Responsibilities:

The Sewer Utility provides reliable sewer service to the community of Mountlake Terrace. This is done by maintaining and repairing the collection system which consists of approximately 70 miles of mains and 30 miles of laterals (the pipe from the main to the customer property line), four lift stations and 1400 maintenance holes, and responding to customer calls for assistance in a timely and proactive manner. The Edmonds treatment plant treats the majority of the City’s wastewater while smaller amount flows to METRO via Brier and Shoreline.



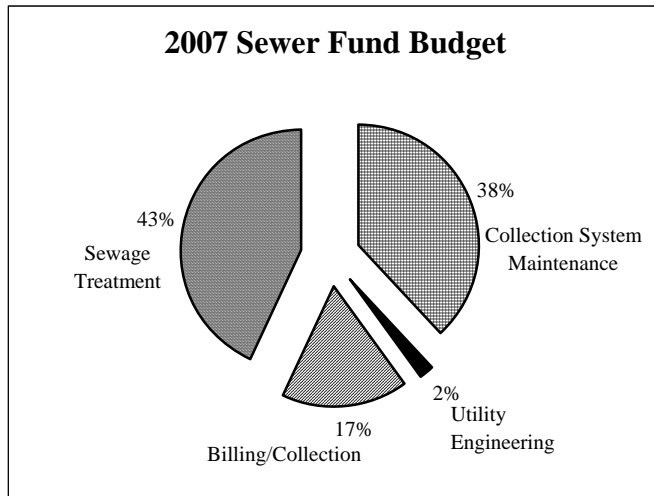
Goals and Objectives:

Council Goal: Maintain appropriate and essential public services in a cost-effective manner

- Respond to problems with the sewer system immediately upon notification
- Repair and maintain lift stations and piping to prevent backups or overflows
- Locate and eliminate rodent access to the collection system
- Detect problems with the system early enough to provide a non-emergency, planned repair
- Complete programs of sewer flow monitoring, smoke testing, and video inspection to locate, identify and quantify the areas of high inflow and groundwater infiltration rates

PERFORMANCE MEASURES	2004 Actual	2005 Actual	2006 Estimate	2007 Adopted	2008 Adopted
Lift Stations inspected twice each week.	98%	98%	98%	98%	98%
Lift Stations repaired within 24 hours	90%	90%	90%	90%	90%
Sewer emergencies responded to within 2 hours of notification.	98%	98%	98%	98%	98%
Sewer collectors, lateral blockages removed w/in 6 hours of notification.	75%	75%	75%	75%	75%
Clean and inspect approximately 25% (17.5 mi.) of the sewer mains (excluding laterals) each year.	50% (8mi)	50% (8mi)	75% (13 mi)	90% (16 mi)	90% (16 mi)
Clean and inspect 25% (7.5 mi.) of the laterals each year.	1% (0.3 mi.)	1% (0.3 mi.)	1% (0.3 mi.)	1% (0.3 mi.)	1% (0.3 mi.)
% of sewer easements inspected and maintained each year.	75%	75%	75%	95%	95%
% of maintenance-holes inspected each year.	60%	60%	70%	80%	80%

Highlights and Changes:



- All the largest City sewer trunk lines cleaned and TV'd in 2005 – no major problems found
- Smoke testing of selected parts of the system to identify illegal connections and areas of high inflow and infiltration
- Engineering services for the sewer operations will be charged directly to the Sewer Utility Operating Fund rather than supported by transfers to the General Fund

Financial Summary:

BEGINNING FUND BALANCE	\$ 1,010,415	\$ 1,139,950	\$ 1,565,853	\$ 1,370,264	\$ 915,990	\$ 418,937
REVENUES						
Sewer Service	2,886,278	2,873,069	2,742,805	3,022,930	2,943,385	3,063,099
Investment Interest	49,302	46,747	48,038	35,024	40,633	31,449
Other Revenues	25,584	37,512	5,056	4,000	30,000	30,300
Total Operating Revenues	\$ 2,961,164	\$ 2,957,328	\$ 2,795,899	\$ 3,061,954	\$ 3,014,018	\$ 3,124,848
Other Financing Sources:						
Transfers From Other Funds	\$ -	\$ -	\$ 14,000	\$ -	\$ -	\$ -
Loan Proceeds	-	-	-	-	-	\$ 1,000,000
Total Other Financing Sources	-	-	14,000	-	-	1,000,000
TOTAL REVENUES & OTHER SOURCES	\$ 3,971,579	\$ 4,097,278	\$ 4,375,752	\$ 4,432,218	\$ 3,930,008	\$ 4,543,785
EXPENDITURES						
Engineering Services	\$ 55,444	\$ 57,023	\$ 100,505	\$ 96,778	\$ 45,761	\$ 47,937
Billing/Collection	280,502	336,090	409,601	397,508	432,498	415,747
Sewage Treatment	869,606	928,147	935,138	1,044,509	1,067,000	1,112,100
Collection System Maintenance	862,601	729,763	775,694	1,106,883	977,313	1,095,490
Total Operating Expenditures	\$ 2,068,153	\$ 2,051,023	\$ 2,220,938	\$ 2,645,678	\$ 2,522,572	\$ 2,671,274
Other Financing Uses:						
Transfers to Other Funds	\$ 763,476	\$ 765,140	\$ 784,550	\$ 770,550	\$ 981,000	\$ 617,000
Easy Retrieval Elect Map Records Sys	-	-	-	-	7,500	7,500
TOTAL EXPENDITURES & OTHER USES	\$ 2,831,629	\$ 2,816,163	\$ 3,005,488	\$ 3,416,228	\$ 3,511,072	\$ 3,295,774
Operating Revenues over (under) Operating Expenditures	\$ 893,011	\$ 906,305	\$ 574,961	\$ 416,276	\$ 491,446	\$ 453,574
ENDING FUND BALANCES						
Reserved For:						
Operating Reserve - 15% of Op Exp	\$ 310,223	\$ 307,653	\$ 333,141	\$ 396,852	\$ 379,511	\$ 401,816
Contingency Reserve	250,000	250,000	250,000	250,000	-	-
Unreserved/Undesignated:	579,727	723,462	787,123	369,138	39,426	846,195
ENDING FUND BALANCES	\$ 1,139,950	\$ 1,281,115	\$ 1,370,264	\$ 1,015,990	\$ 418,937	\$ 1,248,011
TOTAL EXPENDITURES, OTHER USES & FUND BALANCES	\$ 3,971,579	\$ 4,097,278	\$ 4,375,752	\$ 4,432,218	\$ 3,930,008	\$ 4,543,785