

# UTILITIES ELEMENT



## UTILITIES ELEMENT

### INTRODUCTION

The Utilities Element provides information regarding facilities for waste management, electricity, telecommunication, natural gas, television cable, internet service, and cellular service. These facilities are managed by service providers other than the City of Mountlake Terrace.

### BACKGROUND

The Growth Management Act requires that local comprehensive plans include a Utilities Element consisting of information on existing and proposed utilities, including but not limited to electrical lines, telecommunication lines, and natural gas lines.

### **Existing and Future Services**

The following utilities are provided by utility companies to service the residents of Mountlake Terrace.

#### ***Waste Reduction/Recycling***

The Snohomish County Comprehensive Solid Waste Management Plan guides solid waste disposal in Snohomish County including waste prevention and recycling. The County currently has a recycling goal of 50 percent.

The City of Mountlake Terrace, like most other incorporated cities in Snohomish County, has an interlocal agreement with Snohomish County agreeing to participate with the County in the management and disposal of its solid waste and to cooperate to achieve the priorities for waste reduction, recycling, and energy recovery set forth in the Comprehensive Solid Waste Management Plan. The terms of the Solid Waste Interlocal Agreement are in full force and effect for 20 years, from the June 28, 1990, date of the Agreement. The plan has been updated since that time and was last re-issued in March 2002. This plan provides a six-year plan stating what is to be accomplished between 1999 and 2005 and a 20-year plan which presents the missions and goals for solid waste management within the County.

The City has a contract with Waste Management-NW, Inc. for collection of residential, multi-



family, and commercial solid waste including recyclables. This contract was signed in July 2001 and is effective for a period of five years (until July of 2006) with two two-year renewals available. The City requires mandatory collection of solid waste from residents and all residents are required to subscribe for refuse collection service. Billing for refuse collection is performed by Waste Management-NW.

Solid Waste is transported by the contracted hauler to the Southwest Snohomish County Solid Waste Transfer Station located in Mountlake Terrace, where it is placed in leak-proof containers and transported by truck to a railroad depot in Seattle. There the containers are loaded on rail cars for shipment to the Roosevelt Regional Landfill in Roosevelt, Washington. The Roosevelt

## **UTILITIES ELEMENT**

---

Regional Landfill is operated by the Regional Disposal Company, an affiliate of Rabanco Companies of Seattle. The landfill life is expected to be 40 years and has a capacity of 3,000,000 tons/year. It is permitted to accept residential and commercial waste streams, including municipal solid wastes, construction and demolition debris, incinerator ash, wood wastes, sewage sludge, and petroleum contaminated soils.

The City is playing a significant role in helping the County meet its waste reduction/recycling goals. The City offers a residential, multi-family, and commercial recycling program under its contract with Waste Management-NW. Residents subscribing to solid waste pickup services (with the exception of the one-can per month service) automatically receive recycling and yard debris collection services. Recycled material and yard debris is picked up every week. During the winter months from December to mid March, yard debris is only picked up twice monthly. In addition, the City sponsors an annual Spring Cleanup event where residents are allowed to drop off a variety of items for disposal, or recycling. These events have collected refrigerators/freezers, washing machines, stoves, scrap metal, clean wood, tires, and other recyclable materials.

The County annually sponsors a Spring and Fall Household Hazardous Waste Collection event in the local area where reusable latex paint that has been turned in for disposal is remixed, placed in 5 gallon containers and given away to any resident that needs it. Reusable oil-based paints and stains in their original cans, pesticides and other garden products in good condition are also given to residents who have a need for the materials. This program has helped keep large quantities of potentially toxic materials from being disposed in landfills.

In March 1993, the City adopted a resolution on procurement of recycled materials. The resolution encourages City departments to purchase recycled products wherever practicable. Recycled oil is being purchased and utilized in City vehicles. Recycled envelopes and recycled copy paper have routinely been purchased. Laser cartridges and printer ribbons are also recycled. In addition, compost products have been purchased for use by the Parks and Recreation maintenance crews for use in maintenance of flowerbeds and lawns.

### ***Electricity***

Electricity is provided by Snohomish County Public Utilities District No. 1 (PUD No. 1), which receives its electrical power primarily from the Bonneville Power Administration.

Various facilities are located within the City including the Halls Lake Switching Station located on 212<sup>th</sup> Street, east of Highway 99, and three distribution sub-stations located at: 4718 226<sup>th</sup> Street SW; on 228<sup>th</sup> Street, to the west of 48<sup>th</sup> Avenue; and one located across 212<sup>th</sup> Street from the Halls Lake Switching Station. All transmission lines are overhead.

There are a number of 115 kilovolt transmission lines within the city. The general location of the distribution stations and transmission line corridors are shown in the following map.

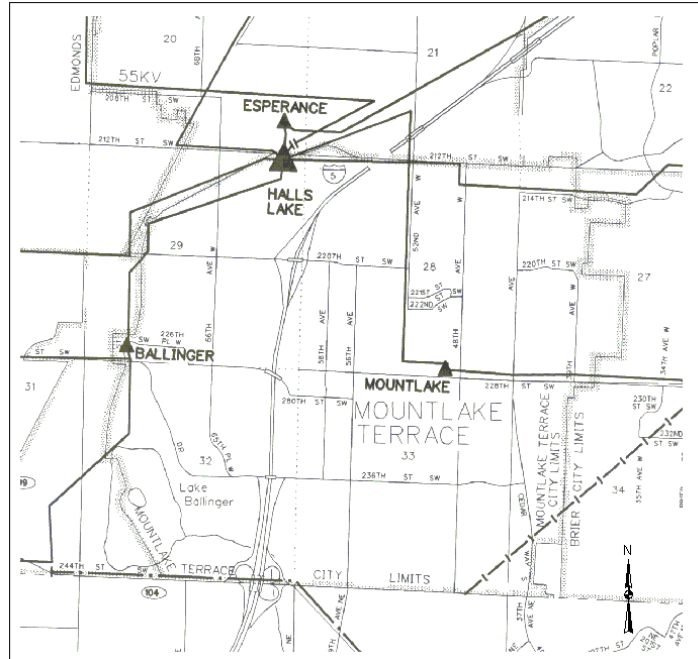
According to the PUD No. 1 Senior Distribution Manager, there are no capacity issues with electrical services to the City.

**UTILITIES ELEMENT**

**Figure UT-1  
Electrical Sub-stations and  
Transmission Lines**

Source: Snohomish County PUD 1, March 1994

- 115KV Transmission Lines
- ▲ Distribution Stations

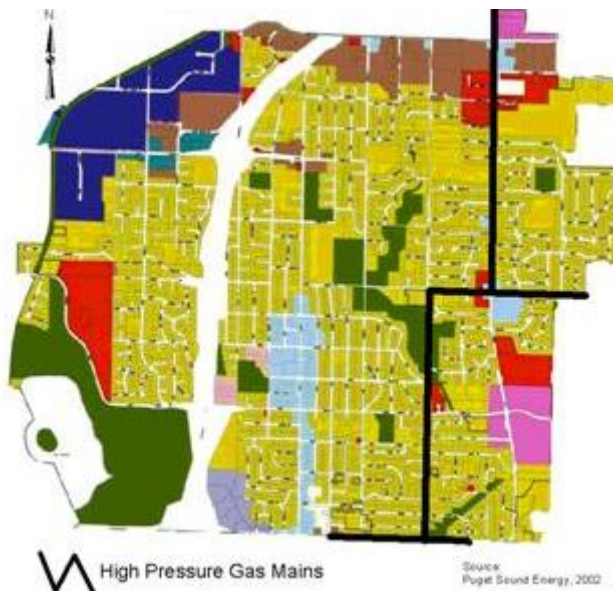


**Natural Gas**

Gas is provided by Puget Sound Energy (PSE) via gas lines located underground throughout the City. PSE builds, operates, and maintains the natural gas facilities serving Mountlake Terrace and the surrounding area.

Natural gas is delivered to a regional distribution system network via an interstate pipeline system. This regional pipeline connects to lateral lines to serve cities and unincorporated areas of counties. The pipeline serving Mountlake Terrace is a lateral line that connects to the regional line. Six- to eight-inch distribution lines branch off the lateral line to provide service through the community. The 16-inch high pressure main gas lines serving the City residents are located along 48<sup>th</sup> Avenue W from the south County line then along 228<sup>th</sup> Street SW then on 44<sup>th</sup> Avenue SW to the north City limits. The following map shows the general location of the high-pressure gas mains within the City.

**Figure UT-2  
High Pressure Natural Gas Mains**



## **UTILITIES ELEMENT**

---

General gas line improvements include installing new mains, increasing the size of existing mains, and replacing deteriorated mains. These improvements and extension of service will occur based on market demand and market analysis to determine if revenues from an extension will offset the cost of construction.

### **Other Utilities**

#### ***Internet Service Providers***

Numerous Internet Service Providers (ISP) serve the City. Dial-up internet services are available to anyone who has access to telecommunication services. ISPs such as AT&T Broadband, Verizon and Earthlink provide high-speed internet services within the City. High-speed internet is available through either Digital Subscriber Lines (DSL) or cable. Comcast currently provides high-speed cable internet service to the City and this service is available in all areas where cable TV service is available. Verizon provides DSL and “FiOS” services to City residents if the capacity is at maximum.

#### ***Cable TV***

Cable TV service to the city is provided by *AT&T Broadband*. Individual homes receive service from cables, which connect to distribution cables in the street. The distribution cables connect to the satellite station via trunk lines. Cables are installed either aerially or underground. Any future expansion that may occur will be completed as technology, market demand, and return on investment allows.

#### ***Telecommunication***

Telephone service is provided by Verizon. There are various facilities located throughout the County and the City. Many of the facilities are co-located with the electrical power provider. General improvements to expand service to meet the projected future demand include constructing additional fiber optic cables, copper cables, and switching stations.

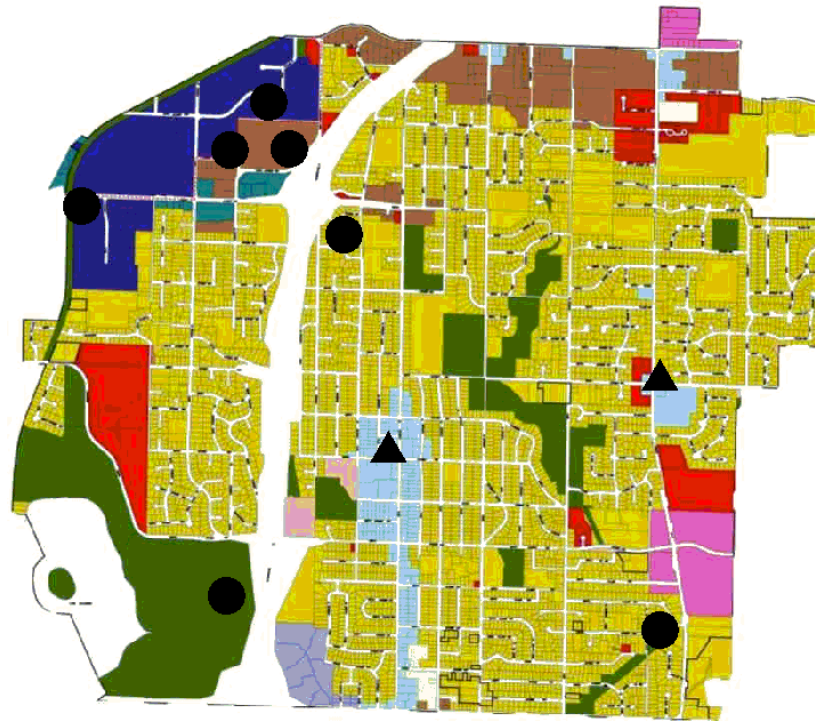
#### ***Cellular Service***

A number of cellular service providers operate within the City. These include AT&T Wireless, Sprint PCS, Verizon Wireless, Qwest, and Nextel. The cellular system will expand in response to several factors; customer growth, shift in distribution patterns, and/or a decrease in service quality or reliability. Cell sites are established throughout the region to transmit phone calls. There are a number of cell sites within the City. Cell sites include sites for mobile cellular phone service and for the Snohomish County Emergency Response System. The following map shows locations of existing and proposed cell sites within the City.

In addition, other cellular service providers maintain cell sites outside the City that serve the Mountlake Terrace area. These cell sites are located in the Lynnwood, Bothell, and Seattle areas.

**UTILITIES ELEMENT**

**Figure UT-3  
Cellular Service Sites**



Source: City of Mountlake Terrace, Planning Department

- Existing Cellular Sites
- ▲ Proposed Cellular Sites

**UTILITIES GOALS AND POLICIES**

**Goals**

The Utilities Element is guided by four goals, as follows. The goals are stated at a very broad level to indicate the desired end-result for key topics.

- GOAL UT-1.** Adequate utility services for local needs
- GOAL UT-2.** Compatibility with land uses and the environment
- GOAL UT-3.** Coordination of services and projects
- GOAL UT-4.** Fair compensation

**Policies**

Below are the Comprehensive Plan policies that correspond with each utilities goal. The City of Mountlake Terrace shall implement the following policies.

- GOAL UT-1. Adequate utility services for local needs**

**UTILITIES ELEMENT**

---

Policy UT-1.1 Encourage the development of utility facilities, subject to local regulations.

Policy UT-1.2 Coordinate with Snohomish County to ensure adequate services for solid waste and recycling.

Policy UT-1.3 Encourage system design and construction practices to minimize the disruption of customer service.

**GOAL UT-2. Compatibility with land uses and the environment**

Policy UT-2.1 Ensure that utility facilities, including lines, poles, and towers owned by private companies, are compatible with adjacent land uses and views.

Policy UT-2.2 Require the undergrounding of all new electrical distribution and communication lines, wherever feasible.

Policy UT-2.3 Encourage the undergrounding of existing electrical distribution and communication lines along key corridors, especially as areas are redeveloped or as streets are reconstructed.

Policy UT-2.4 Avoid, where possible, locating overhead lines in greenbelt and open spaces.

Policy UT-2.5 Require facilities to be located and constructed in ways that protect environmentally critical areas.

**GOAL UT-3. Coordination of services and projects**

Policy UT-3.1 Promote the co-location of facilities.

Discussion: Co-location of facilities can create cost-efficiencies and reduce impacts to the community. An example of co-location is the sharing of one tower by more than one company to locate cellular service equipment.

Policy UT-3.2 Coordinate utility construction with other public facility improvements.

Discussion: This would include securing sidewalk and trail easements over utility corridors when feasible.

**GOAL UT-4. Fair compensation**

Policy UT-4.1 Collect reasonable fees from private utility companies for right-of-way uses, business licenses, and franchise lease agreements.

## **UTILITIES ELEMENT**

---

### **PERFORMANCE MEASURES**

Measuring performance or progress is an important way to see whether expectations are being met. In this Comprehensive Plan, one performance measure has been selected for each major topic. Annually, the City will make a good faith effort to meet or exceed the performance measures, check data for each of the performance measures, and report the results.

#### **Performance Measure**

For the Utilities Element, the City of Mountlake Terrace has a performance measure related to sustainability and conservation, consistent with the adopted Sustainability Strategy, and will annually report on its progress. The measure is as follows:

- Water system leakage to be no more than 10% annually.

### **ACTIONS TO TAKE**

To help carry out this chapter, certain action steps are needed. During the next several years, these actions include the following:

1. Develop a strategy by 2010 to encourage undergrounding of overhead lines in the Town Center and other areas where most appropriate.
2. Review the fees being charged to utility companies for right-of-way uses and for leases of City property.