



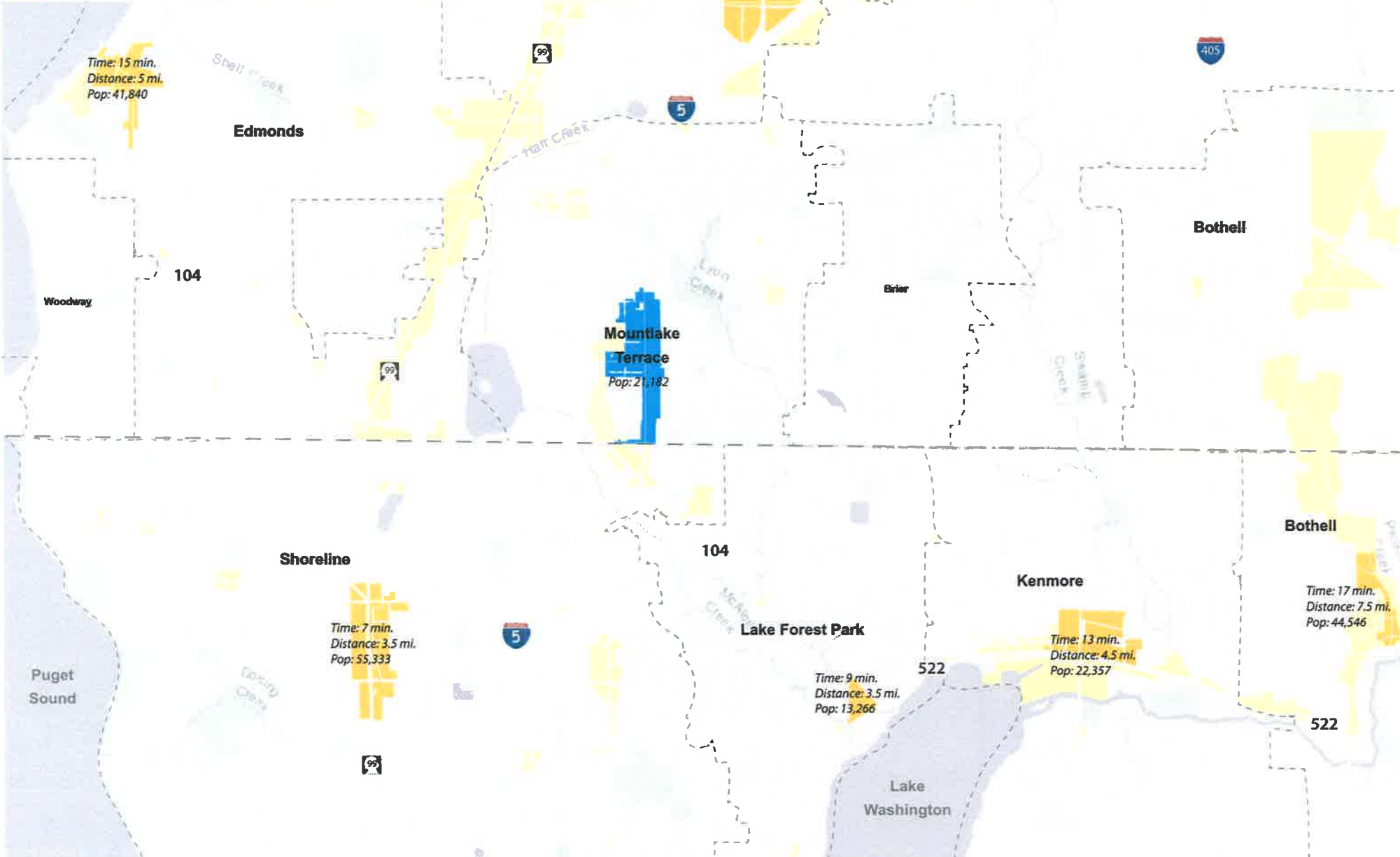
SCJ ALLIANCE
CONSULTING SERVICES

Neighboring Town Centers & Commercial Areas



The data used to make this map has been tested for accuracy, with every effort being made to ensure that it is timely, accurate and reliable. However, SCJ Alliance and its personnel make no guarantee or warranty to its accuracy as to labeling, dimensions, placement or location of any map features contained herein. It is recommended the recipient and/or user verify all information prior to use. The use of this data for purposes other than those for which they were created may yield inaccurate or misleading results.

MLT Town Center **Neighboring Town Centers** **Commercial Areas**



Snohomish County

Lynnwood

Edmonds

Bothell

Mountlake Terrace

Pop: 21,182

Shoreline

Lake Forest Park

Kenmore

Bothell

Time: 17 min.
Distance: 7.5 mi.
Pop: 44,546

Lake Washington

Puget Sound

104

104

522

522



Shell Creek

Hair Creek

Lyon Creek

Sauhl Creek

Cowd Creek

Monte Vista Creek

Palix Creek

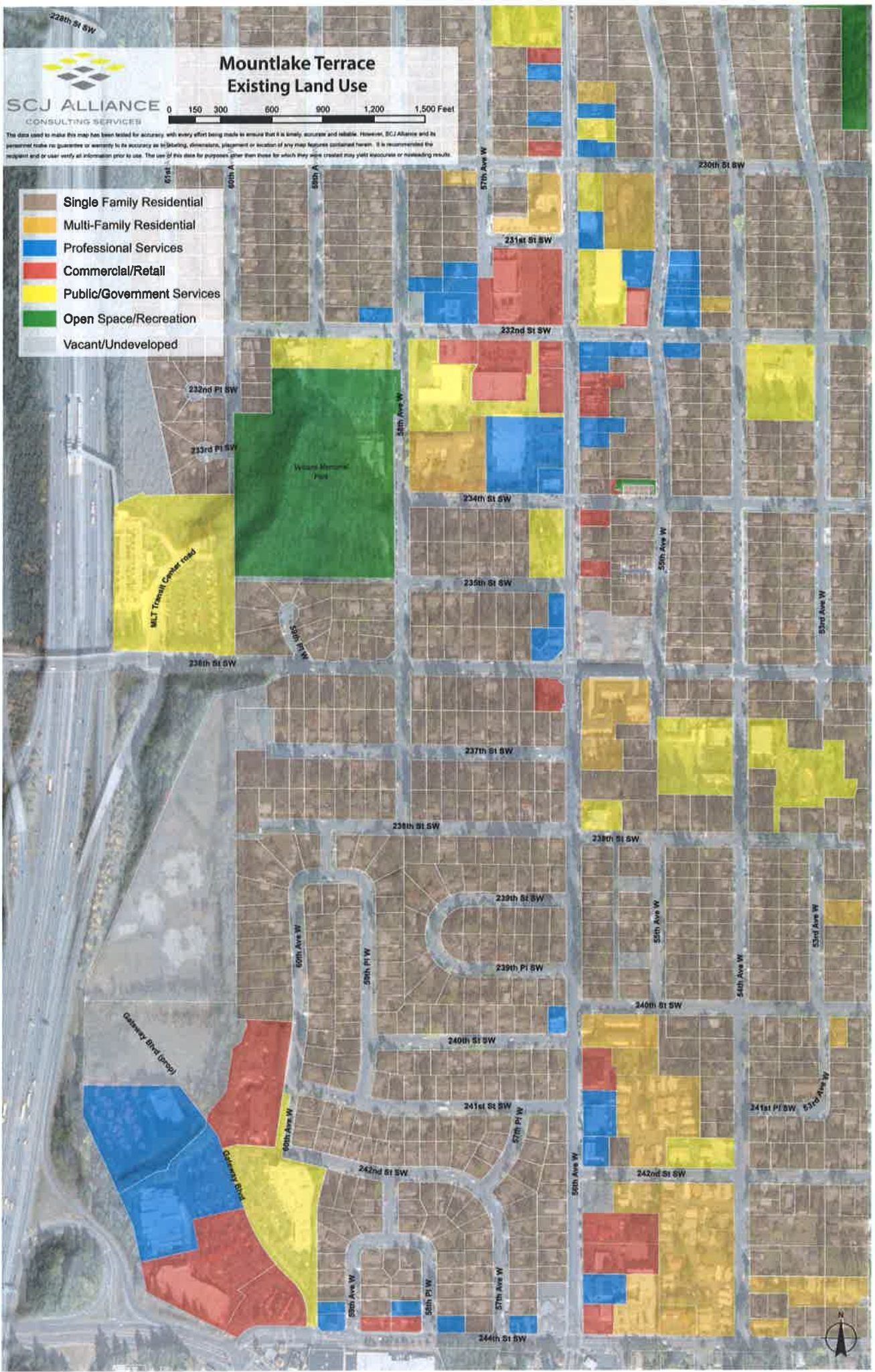


Mountlake Terrace Existing Land Use



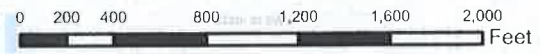
The data used to make this map has been tested for accuracy, with every effort being made to ensure that it is timely, accurate and reliable. However, SCJ Alliance and its personnel make no guarantee or warranty to the accuracy as to the timing, dimensions, placement or location of any map features contained herein. It is recommended the recipient and/or user verify all information prior to use. The use of this data for purposes other than those for which they were created may yield inaccurate or misleading results.

- Single Family Residential
- Multi-Family Residential
- Professional Services
- Commercial/Retail
- Public/Government Services
- Open Space/Recreation
- Vacant/Undeveloped

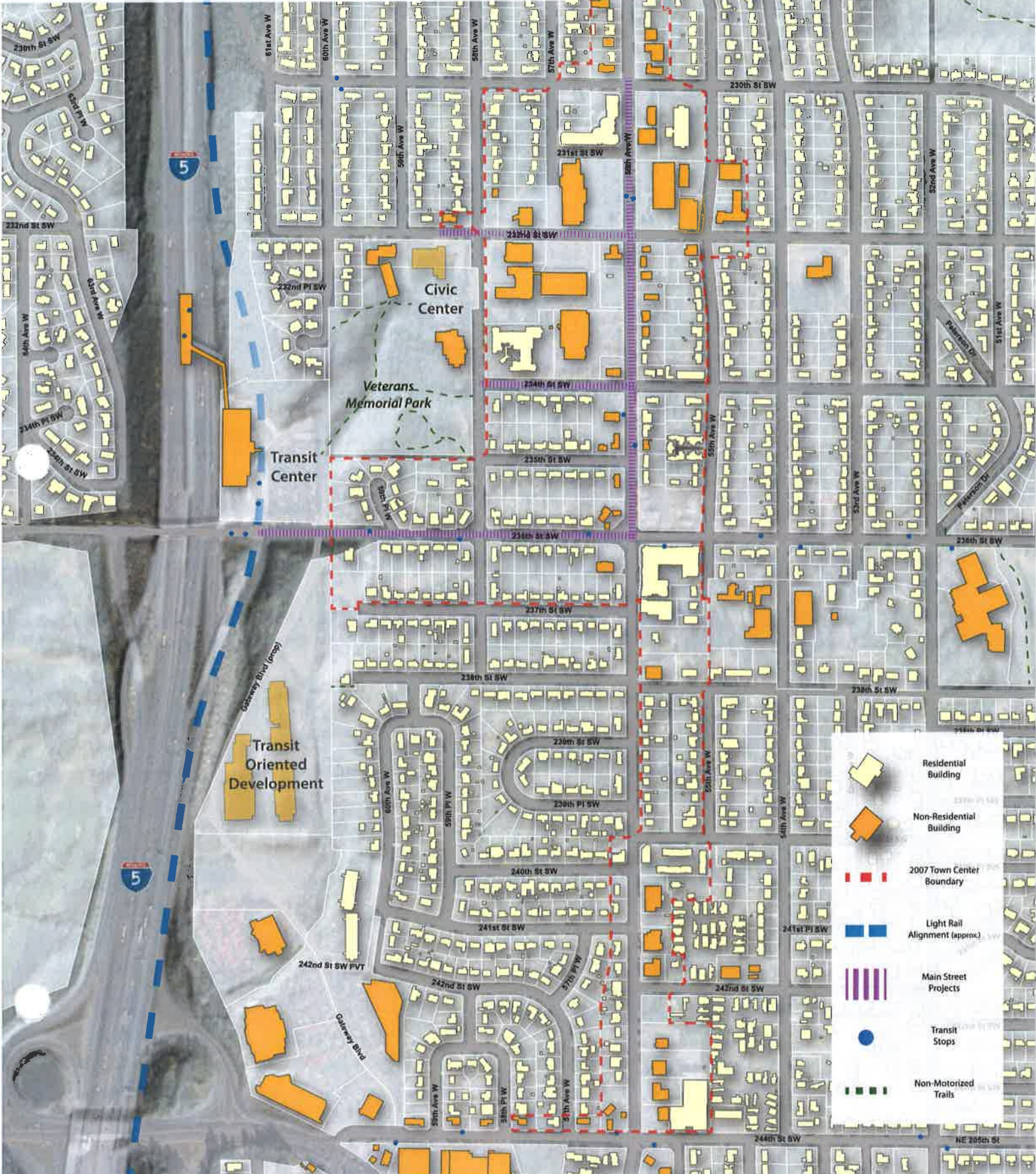


Town Center

City of Mountlake Terrace



The data used to make this map has been tested for accuracy, with every effort being made to ensure that it is timely, accurate and reliable. However, SCJ Alliance and its personnel make no guarantee or warranty to its accuracy as to labeling, dimensions, placement or location of any map features contained herein. It is recommended the recipient and/or user verify all information prior to use. The use of this data for purposes other than those for which they were created may yield inaccurate or misleading results.



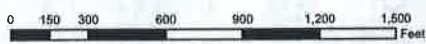
	Residential Building
	Non-Residential Building
	2007 Town Center Boundary
	Light Rail Alignment (approx.)
	Main Street Projects
	Transit Stops
	Non-Motorized Trails

228th St SW

5 & 10 Minute Walking Map City of Mountlake Terrace



SCJ ALLIANCE
CONSULTING SERVICES

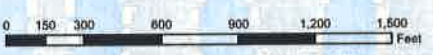


The data used to make this map has been tested for accuracy, with every effort being made to ensure that it is timely, accurate and reliable. However, SCJ Alliance and its personnel make no guarantee as to the accuracy or timeliness of the data, dimensions, placement or location of any map features contained herein. It is recommended the recipient and/or user verify all information prior to use. The use of this data for purposes other than those for which they were created may yield inaccurate or misleading results.

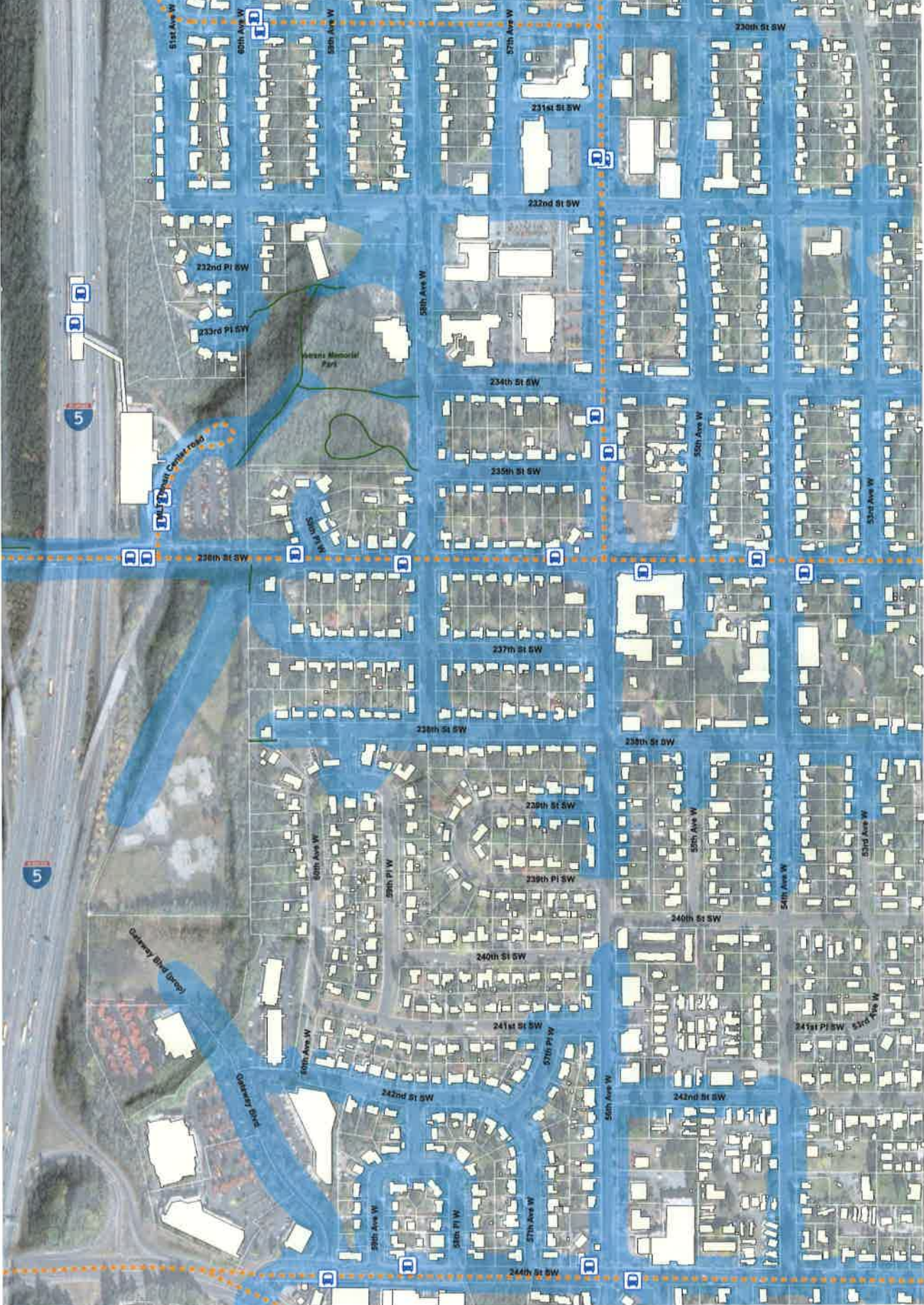


Transit Stop: 5 Minute Walk
City of Mountlake Terrace

SCJ ALLIANCE
CONSULTING SERVICES



The data used to make this map has been tested for accuracy, with every effort being made to ensure that it is timely, accurate and reliable. However, SCJ Alliance and its personnel make no guarantee or warranty as to labeling, dimensions, placement or location of any map features contained herein. It is recommended that the recipient and/or user verify all information prior to use. The use of this data for purposes other than those for which they were created may yield inaccurate or misleading results.





Mountlake Terrace Existing Land Use

0 150 300 600 900 1,200 1,500 Feet

The data used to make this map has been tested for accuracy, with every effort being made to ensure that it is timely, accurate and reliable. However, SCJ Alliance and its personnel make no guarantee or warranty to the accuracy, completeness, placement or location of any map features contained herein. It is recommended the individual user verify all information prior to use. The use of this data for purposes other than those for which they were created may yield inaccurate or misleading results.

- Minor Arterial (3,000 -15,000 ADT)
- Major Collector (1,000 - 5,000 ADT)
- Local Access Streets
- Proposed Major Collector

