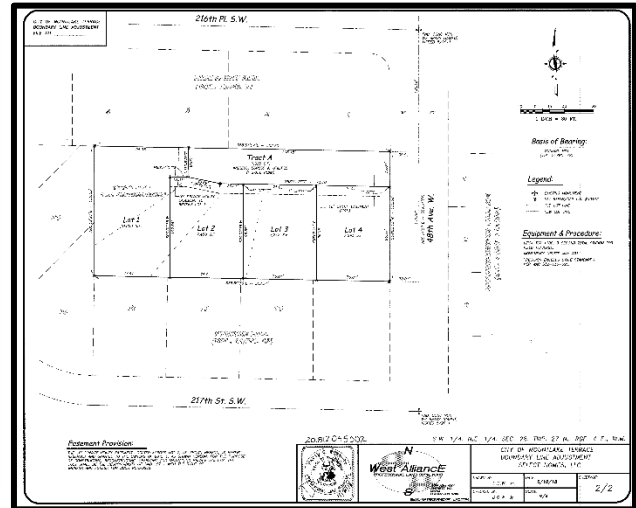


# Wang 4-Lot Short Plat



- **Location:** 21608 48<sup>th</sup> Ave W (4802, 4806, 4808, 4810 216<sup>th</sup> Ct. W)
- **Zoning:** Single Household Residential (RS 7200)
- **Applicant:** Wang Shu-Mei / Select Homes, Inc.
- **Description:** A .95 acre lot, was subdivided into four residential lots. The new, detached, single-family homes will take access from a private driveway from 48<sup>th</sup> Ave W. Frontage improvements include a planting strip and sidewalk, each five feet wide. An existing home was demolished.
- **Status:** Final Short Plat approved. Civil work completed. Building permits for all four homes have been issued and are under construction.