




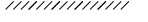
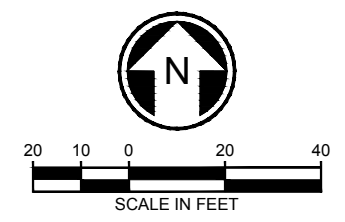
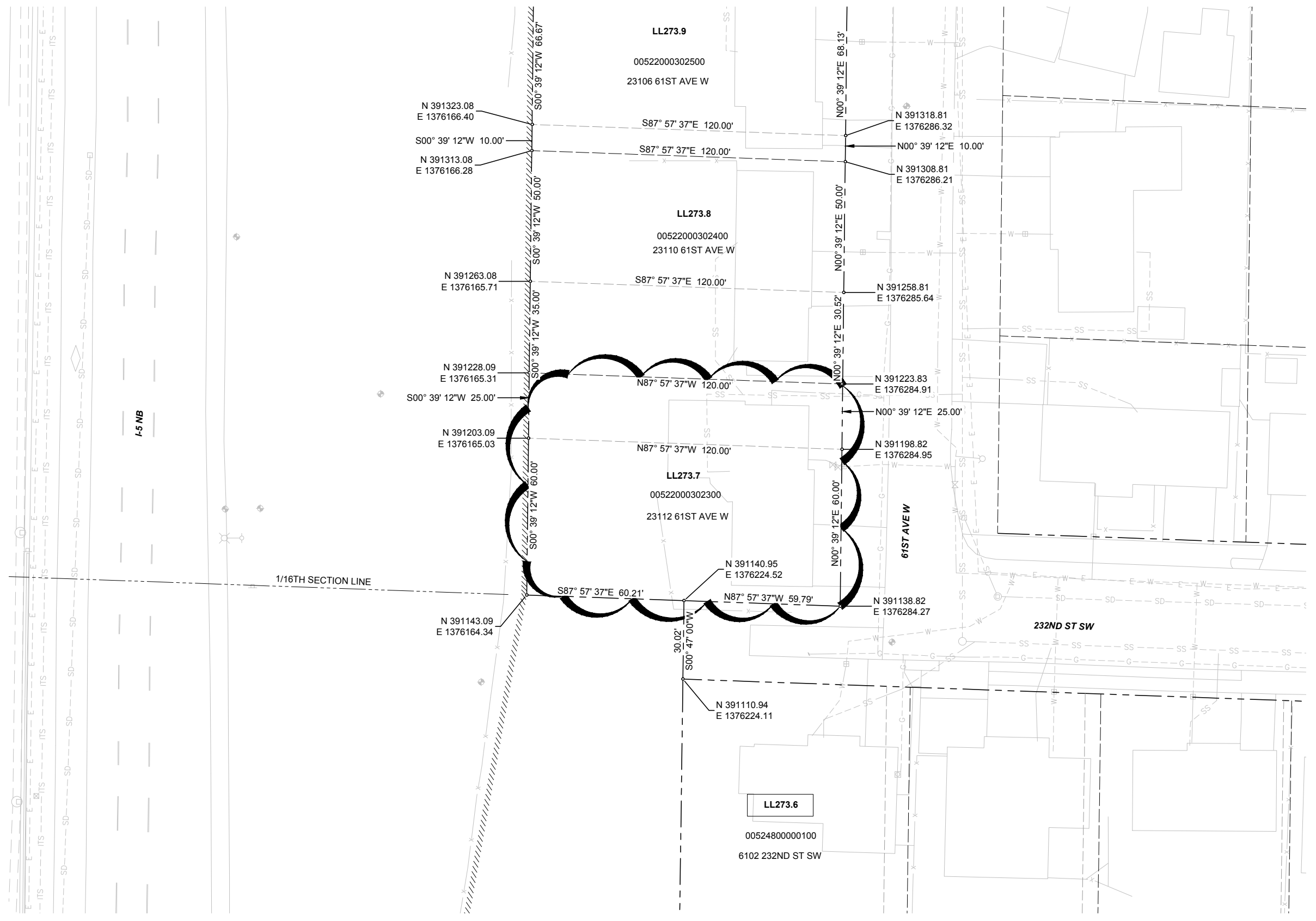




LEGEND:

-  SITE BOUNDARY
-  PROPERTY LINE
-  CITY RIGHT-OF-WAY
-  SECTION LINE
-  PLAT LINE
-  WSDOT LIMITED ACCESS



09/18/18 | 1:06 PM | LINGET
C:\CAD\LIB\PLANNING\WEST\DM86617\LOT PLANS DWG

PERMIT SUBMITTAL					DESIGNED BY: J. LONG		 trusted design partners			SCALE:		LYNNWOOD LINK EXTENSION CONTRACT L300		DRAWING No.: D	
					DRAWN BY: L. NGET			LINE IS AT FULL SCALE		FILENAME:		NE 200TH STREET TO LYNNWOOD TRANSIT CENTER		LOCATION ID:	
					CHECKED BY: S. KITTERMAN					CONTRACT No.:		SITE D PLOT PLAN 23112 61ST AVENUE W		SHEET No.:	
					APPROVED BY: K. COLLINS			SUBMITTED BY:		DATE:				DATE:	
No.	DATE	DSN	CHK	APP	REVISION										