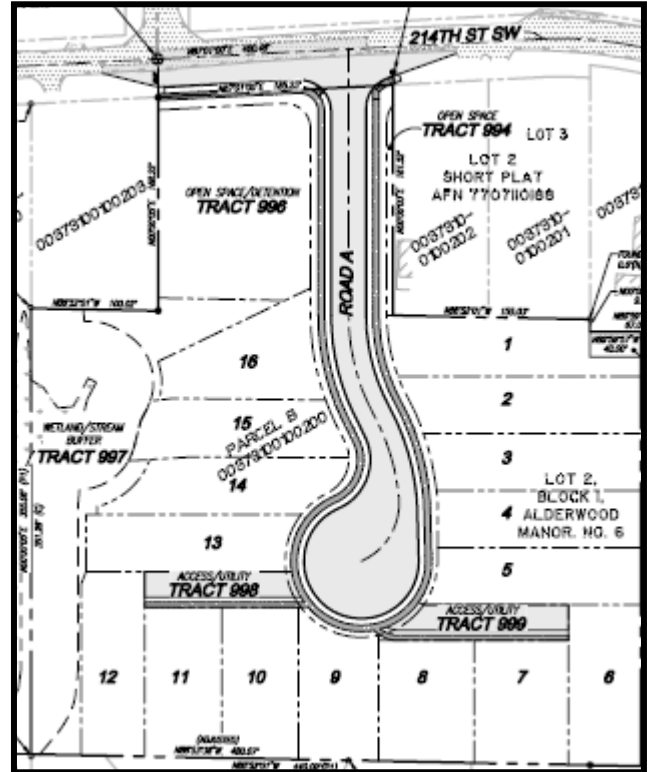
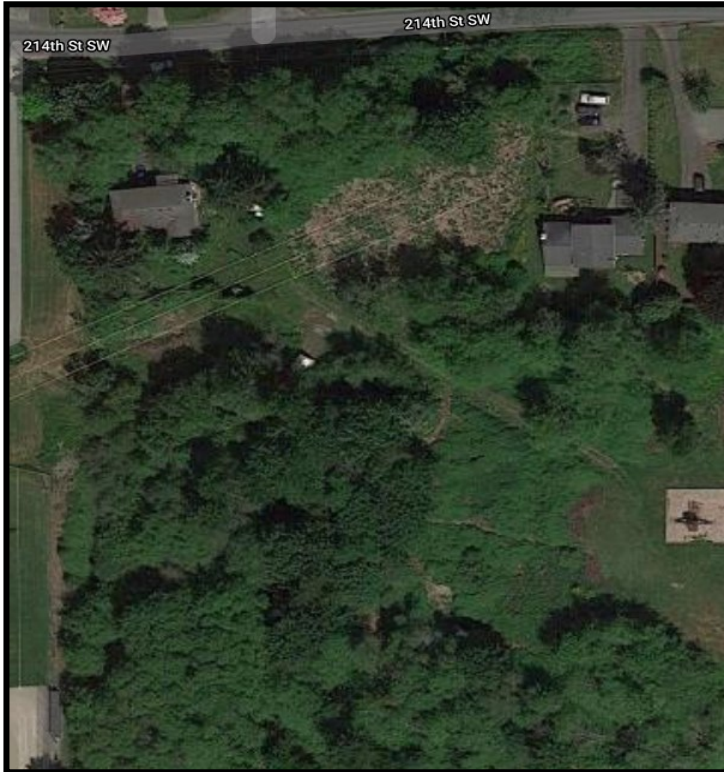


# Church Subdivision

## 16 - Lot Development

37XX 214th St SW



**Zoning:** Single-Household Residential 7200 (RS7200)

**Applicant:** Land Pro Group

**Description:** A 4.6 acre property has received preliminary plat approval to be divided into 16 single-household lots. Plat development will include the creation of a new city street, and frontage improvements along 214th St SW.

**Status:** Civil review underway.