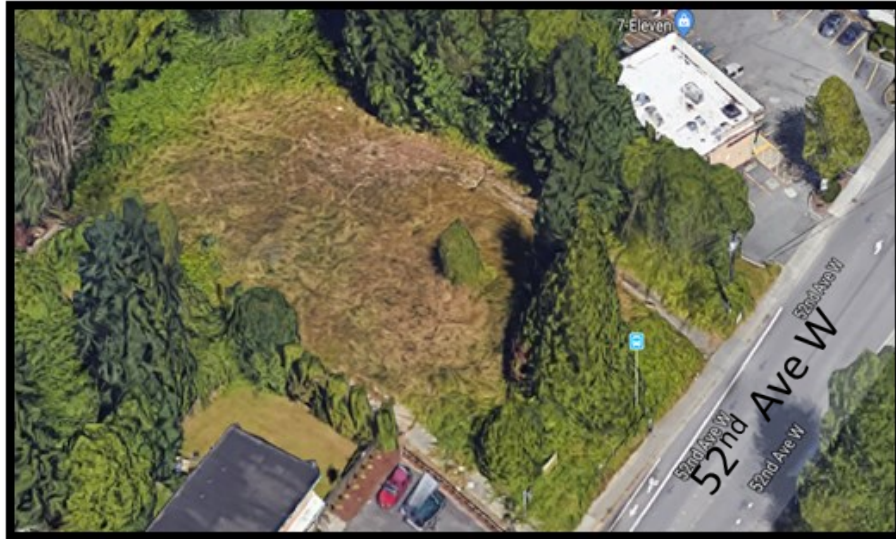


Park Lane Townhomes

18-Unit Development

21216 52nd Ave W



Zoning: Medium Density Multi-household RMM

Applicant: Monterra Partners, LLC

Description: A 1.01 acre parcel has preliminary approval to subdivide into 18 lots for developing 18 townhome units in four separate buildings. Access is from 52nd Ave W via private driveway. Frontage improvements include 10' pedestrian activity area.

Status: Preliminary Plat approved. Awaiting application for civil and building permits.

