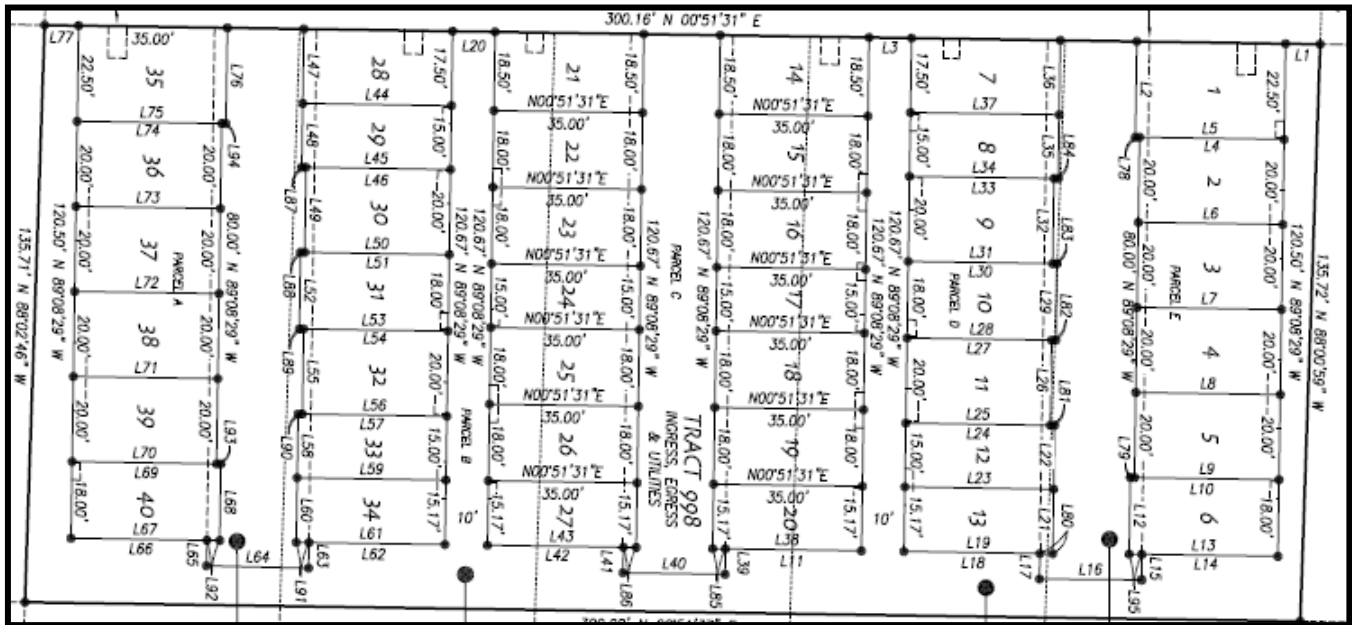


Willow Glenn Townhomes 40 - Unit Development

23809, 23901, 23903, 23905 and 23907 55th Ave W



55th Ave W

Zoning: Residential transitional (RS-T)

Applicant: Landverk Quality Homes

Description: Five lots totaling .93 acres to be subdivided into 40 townhome lots. The project consists of 6 townhome buildings, frontage improvements and internal autocourts.

Status: Under Preliminary Plat review